

KDI SCHOOL
K**D**I SCHOOL
KDI **I** SCHOOL
KDI **S**CHOOL
KDI **S**CHOOL
KDI **S**CHOOL
KDI **S**CHOOL
KDI **S**CHOOL
KDI **S**CHOOL
KDI **S**CHOOL

Knowledge sharing
Dedicated to
Innovative policies for
Sustainable development

**Where
the Difference
Begins**



KDI

KDI 한국개발연구원
Korea Development Institute

KDI SCHOOL
of Public Policy and Management



KDI School aims to cultivate



and consultation on development policy.



highly competent international experts



KDI School fosters the next generation of leaders



with theoretical knowledge and practical skills

KDI

SCHOOL



who can exercise global leadership



in the field of development economics and public policy,



and systematically conduct research



in every sector of our society.

CONTENTS

10

WELCOME MESSAGE
KDI SCHOOL HISTORY
WHY KDI SCHOOL?

16

PREMIER
EDUCATION

Academic Programs
Faculty

40

EXTENSIVE
SUPPORT

Campus Life
Learning Support
Social Activities
Scholarship Opportunities for
International Students
Admissions for International Students

24

GLOBAL
NETWORK

International Exchange and Career Development Programs
Development Research and International Cooperation
Student & Alumni Profile
KDI School Network

KDI School of Public Policy and Management was established in 1997 to educate and develop the next generation of leaders in today's rapidly changing and globalizing economy.

The School offers an innovative educational program focusing on policy and international issues and aims to transform mid-career professionals into leaders of their respective fields by equipping them with new knowledge, vision and a global perspective.

KDI School also draws from a wealth of research and resources from the Korea Development Institute (KDI), the nation's leading economic think tank, to share Korea's unique development experience with the global community.

K KNOWLEDGE
SHARING
D DEDICATED
TO
I INNOVATIVE
POLICIES FOR
S SUSTAINABLE
DEVELOPMENT

Message from the Dean



The digital transformation triggered by the Fourth Industrial Revolution and accelerated by the COVID-19 pandemic is generating new growth drivers, centered around the fields of data, networks, and artificial intelligence (D.N.A.). However, this transformation is also exacerbating the crisis of labor and deepening inequality. At the same time, the escalating climate crisis and geopolitical tensions pose a threat to us. These challenging times demand new leaders armed with penetrating insights and rich policy knowledge.

KDI School provides a cutting-edge education, underpinned by academic in- sights from our faculty pool of top-notch experts with innovative research and policy-making experience behind them. The master’s and Ph.D. programs in public policy, development policy and public management, taught in English, have a world-class reputation.

KDI School is celebrating its 26th anniversary this year. Since its inception in 1998, more than 7,100 students, including 2,900 international students drawn from 141 countries, have graduated. Our alumni form an extensive and flourishing global network of leaders, reaching every corner of the globe and committed to working together as agents of change to make the world a better place.

Since relocating to the Sejong Campus in 2015, KDI School has strived to contribute to the development and strengthening of the administrative capital and to enhancing Korea’s position on the world stage and its role as a global leader and partner. The Master’s and Ph.D. in Public Policy and Management program, the first to be taught in Korean, was launched to meet the increasing demand for policy education in the administrative capital. This year, we have welcomed the first cohort of students into its doctoral program.

Building on our 26-year history, KDI School will leap forward as a global public policy graduate school that leads innovations beyond education. We aim to foster global leaders that contribute to sustainable development and become policy innovators.

KDI School hopes to be the stepping stone for those who dream of making a difference as global leaders in the midst of a great transformation. KDI School will continue to be where the difference begins.

YOU, Jong-II
Dean, KDI School of Public Policy and Management

A handwritten signature in black ink, appearing to read 'Ji You'.

HISTORY

1997-2002

- 1997**
 - 12** Established with authorization from the Ministry of Education and Human Resources Development
- 1998**
 - 03** Classes began (4 programs)
 - 07** Dr. Lim, Gill-Chin inaugurated as the first dean
- 1999**
 - 01** Appointed by KOICA (Korea International Cooperation Agency) as partner institution
 - 11** Official name changed from KDI School of International Policy and Management to KDI School of Public Policy and Management
 - 12** Designated as an APEC Education Hub
- 2000**
 - 02** Global Master's Program (GMP) launched, enabling students to acquire dual degrees both at KDI School and abroad
 - 09** Special Program on Economic Policy-Making launched
 - 10** The Center for National Leadership renamed into the Center for Executive Education
- 2001**
 - 01** Designated as the Korean Hub of the World Bank GDLN (Global Development Learning Network)
 - 02** Ph.D. Program launched
 - 07** Dr. Chung, Chin-Seung inaugurated as the second dean
- 2002**
 - 02** Master's Programs consolidated into the Master of Public Policy (MPP) and Master of Business Administration (MBA) programs
 - 10** KDI School Alumni Association established

2003-2013

- 2003**
 - 01** E-Learning Program Launched
 - 02** International Master's Program in Practicing Management (MPM) established
- 2004**
 - 03** Master in Foreign Direct Investment (MFDI) established
 - 04** Dr. Chung, Chin-Seung inaugurated as the third dean
- 2005**
 - 05** Digital Library opened
- 2006**
 - 02** Master in Asset Management (MAM) established
- 2007**
 - 01** OECD Seoul Center opened
 - 10** Dr. Hahm, Sang-Moon inaugurated as the fourth dean
- 2010**
 - 01** MPP program expanded to MPP, MPP/ED, and MPP/PM
 - 10** Dr. Nam, Sang-Woo inaugurated as the fifth dean
- 2011**
 - 10** Designated as a participant of the "Campus Asia" project
- 2012**
 - 01** Master's program restructured into MDP and MPP, Ph.D. in Development Policy established
 - 12** Dr. Nam, Sang-Woo inaugurated as the sixth dean
- 2013**
 - 05** Received "Outstanding Institution Award" and "Outstanding Leadership Award" from National Research Council For Economics, Humanities and Social Sciences
 - 08** Designated as participant in the Korea EU Industrialized Countries Instrument Education Cooperation Program

2014-2017

- 2014**
 - 07** Assumed the role of the Global Development Learning Network (GDLN) Global Secretariat from the World Bank
 - MPP program received accreditation by NASPAA-The Global Standard in Public Service Education
 - 12** Dr. Chun, Hong-Tack inaugurated as the seventh dean
- 2015**
 - 01** Master of Public Management (MPM) launched
 - 03** Selected by the Ministry of Education as a certified institution for the International Education Quality Assurance System
- 2016**
 - 03** Integrated Library System for KDI Central Library established
 - 05** Received an "Outstanding Institution Award" from National Research Council for Economics, Humanities and Social Sciences
 - 11** Became the first Korean research institute to be a 3ie (International Initiative for Impact Evaluation) Associate Member
 - Held academic sessions for public officials from key ministries at Sejong Government Complex
- 2017**
 - 05** "Case Study on Korea's development experience in the context of Science of Delivery" registered on The Global Delivery Initiative Library by the World Bank
 - 07** MDP program received accreditation by NASPAA-The Global Standard in Public Service Education

2018-2023

- 2018**
 - 06** Dr. You, Jong-Il inaugurated as the eighth dean
 - 07** MPM program received accreditation by NASPAA-The Global Standard in Public Service Education
- 2019**
 - 01** Proclamation of Human Rights Management
 - 02** Received an "Innovative Institution Award" from National Research Council for Economics, Humanities and Social Sciences
- 2020**
 - 01** Master in Intellectual Property and Development Policy (MIPD) launched, Doctoral degree of Public Management (PM) launched
 - 05** Received an "Outstanding Institution Award" from National Research Council for Economics, Humanities and Social Sciences
 - 08** Master of Public Policy and Management (MPPM) launched
- 2021**
 - 03** Selected by the Ministry of Education as a certified institution and an excellent university for the International Education Quality Assurance System
 - 06** Received "Award for 2020 Best University Library" from the Ministry of Education
 - 09** Dr. You, Jong-Il inaugurated as the ninth dean
- 2022**
 - 03** Selected by the Ministry of Education as a certified institution and an excellent university for the International Education Quality Assurance System
- 2023**
 - 05** Received a "Parliamentary Librarian Award" from Korean Association of Scholarly Information
 - 08** Appointed as a 2023-2026 board member of ASIA Water Council

WHY KDI SCHOOL?

KDI School has positioned itself as an unrivaled institution in teaching and research in the field of development and public policy, equipped with cutting-edge facilities and systematic support for students. KDI School offers a dynamic and vibrant academic curriculum provided by top-notch faculty members.



NASPAA

Accreditation

for MPP, MDP, and MPM programs



Diverse student body, international students representing more than

45%

of the student body



Most extensive international partnership network among graduate-level schools in Korea

28

 Countries

82

 Institutions

100%

Percentage of students receiving scholarships



Vibrant education program
Asia's top think tank KDI

Go To Think Tank Index Report



Top-notch Faculty

excel in academic achievements &
field experience



Part-time

studies available for working professionals



Double Degree

programs and student exchange programs with
the world's leading universities



With a trimester system (three semesters per year),
students can finish the coursework within 1 year

Only 1 year



IEQAS University

International Education Quality Assurance
System Institution accreditation by Korean
Ministry of Education



Globe-spanning Alumni Network:

141

 Countries
Around

2,900

 Alumni

Academic
Programs

18p

Faculty

20p

PREMIER EDUCATION



Academic Programs

Overview

KDI School of Public Policy and Management offers master's degree and Ph.D. degree programs. The school's curricula draw extensively from the valuable resources accumulated at KDI, the research institute. KDI School continually strives to equip professionals to meet the diverse demands of today's constantly changing society.

Master's Degree Programs

KDI School's master's degree programs are divided into full-time and part-time tracks. Full-time students are able to complete their coursework by the end of the first year. They usually spend the second year working on their research project. The minimum time required for coursework completion is 1 year.

Part-time programs use a flexible combination of evening and weekend classes, and students can graduate within two years without interrupting their careers. The MDP, MPP, and MPM programs are available to both full-time and part-time students. The MIPD program is available only to full-time students. All classes are conducted in English, except the MPPM program which is offered in Korean language.

	Full-time Programs	Part-time Programs* (Residents in Korea Only)
Programs	<ul style="list-style-type: none"> • Master of Public Policy • Master of Development Policy • Master of Public Management • Master in Intellectual Property and Development Policy (Full-time Only) • Master of Public Policy and Management (Part-time / Domestic Students Only**) 	
Study Areas	<ul style="list-style-type: none"> • Finance and Macroeconomic Policy (MPP) • Trade and Industrial Policy (MPP) • Public Finance and Social Policy (MPP) • Regional Development and Environment Policy (MPP) • Sustainable Development (MDP) • International Development (MDP) • Public Administration and Leadership (MPM) • Strategic Management (MPM) • Global Governance and Political Economy (MPM) • Data Science for Public Policy and Management (MPP, MDP, MPM) • Intellectual Property and Innovation Policy (MIPD) • Public Policy and Management (MPPM / Domestic Students Only) 	
Duration	<ul style="list-style-type: none"> • 1 year 3 months • Coursework: 1st year at KDI School • Thesis Writing: 2nd year in home country 	<ul style="list-style-type: none"> • 2 years (6 semesters)
Class Schedule	<ul style="list-style-type: none"> • Daytime (08:30 ~ 18:00) 	<ul style="list-style-type: none"> • Weekday Evenings (19:00 ~ 22:30) • Friday (14:00 ~ 22:30) • Saturday (09:00 ~ 17:30)
Tuition	<ul style="list-style-type: none"> • 28,000,000 KRW • Scholarship opportunities available 	
Requirements for Graduation	<ul style="list-style-type: none"> • Minimum 39 credits (including research project) 	

* Part-time master's degree programs may offer a limited number of courses.

** For the tuition and graduation requirements of Master of Public Policy and Management, please refer to MPPM brochures.

Ph.D. Programs

KDI School offers Ph.D. programs in Public Policy, Development Policy, and Public Policy and Management. The goal of the Ph.D. programs is to train highly qualified candidates able to produce cutting-edge research in their chosen field.

	Ph.D. Programs
Programs	<ul style="list-style-type: none"> • Ph.D. in Development Policy (Full-time) • Ph.D. in Public Policy (Full-time) • Ph.D. in Public Policy and Management (Part-time / Domestic Students Only)
Study Areas	<ul style="list-style-type: none"> • Development Policy (DP) • Public Policy (PP) • Public Policy and Management (PPM / Korean-English Bilingual Program)
Duration	<ul style="list-style-type: none"> • Minimum 3 years
Class Schedule	<ul style="list-style-type: none"> • Daytime (08:30 ~ 18:00) • Weekday Evenings (19:00 ~ 22:30) • Friday (14:00 ~ 22:30) • Saturday (09:00 ~ 17:30)
Tuition	<ul style="list-style-type: none"> • 25,000,000 KRW for 3 years • First year: 15,000,000 KRW • Second and third year: 5,000,000 KRW respectively • From fourth year: 1,000,000 KRW per year
Requirements for Graduation	<ul style="list-style-type: none"> • 36 credits • Prospectus Defense • Candidacy Paper • Final Oral Dissertation Defense (FODD)



KDI School Faculty

Sustainable Development and International Development

Name	Education	Expertise	Position
KIM, Dongseok	Ph.D. Stanford Univ.	Productivity and Growth Input-Output Analysis	Professor
LIM, Wonhyuk	Ph.D. Stanford Univ.	Industrial Organization Economic Development	
PARK, Jin	Ph.D. Univ. of Pennsylvania	Development Economics Government Reform	
YOU, Jong-Il	Ph.D. Harvard Univ.	Macroeconomics Development Policy	
HAN, Baran	Ph.D. Cornell Univ.	Development Public Economics	Associate Professor
KIM, Dongyoung	Ph.D. Massachusetts Institute of Technology	Environmental Planning Public Dispute Resolution	
LEE, Changkeun	Ph.D. Univ. of Michigan	Economic History Productivity, Labor Economics	
MERFELD, Joshua	Ph.D. Univ. of Washington	Development Economics, Labour Economics, Agricultural Economics	
PARK, Sungho	Ph.D. Univ. of California Santa Cruz	Development Economics	Assistant Professor
CHUN, Hongtack	Ph.D. Cornell Univ.	Economic Development North Korean Economy	Professor Emeritus
KIM, Joon-Kyung	Ph.D. Univ. of California San Diego	Economic Development, Finance	
NAM, Sangwoo	Ph.D. Massachusetts Institute of Technology	Economic Development	Visiting Professor
OH, Joon	M.A. Stanford Univ.	International Public Policy	

Finance and Macroeconomic Policy

Name	Education	Expertise	Position
CHO, Dongchul	Ph.D. Univ. of Wisconsin, Madison	Macroeconomics International Finance	Professor
KIM, Hyeonwook	Ph.D. Columbia Univ.	International Finance Macroeconomic Policies	
LEE, Jinsoo	Ph.D. Georgia Institute of Technology	Investment, International Finance	
SOHN, Wook	Ph.D. Columbia Univ.	Banking and Finance Monetary Policy	
LEE, Seohyun	Ph.D. Univ. College London	Applied Macroeconomics Econometrics	Assistant Professor
HAHM, Sangmoon	Ph.D. Univ. of Chicago	International Finance Monetary Policy	Professor Emeritus
HWANG, Sunjoo	Ph.D. The Univ. of Texas at Austin	Financial Economics Finance Supervision	Adjunct Professor
KIM, Hyungtai	Ph.D. Univ. of Washington	International Finance Macroeconomics	
KIM, Sungryong	Ph.D. Columbia Univ.	Macroeconomics International Trade	
KIM, Junil	Ph.D. Brown Univ.	Monetary Policy	
LEE, Kunho	Ph.D. Univ. of Minnesota	Economics, Finance	Visiting Professor

Trade and Industrial Policy

Name	Education	Expertise	Position
LEE, Siwook	Ph.D. Univ. of Michigan	International Trade Economic Development	Professor
SHADIKHODJAEV, Sherzod	Ph.D. Korea Univ.	International Trade Law WTO	
TABAKIS, Chrysostomos	Ph.D. Columbia Univ.	International Trade Political Economy	
BAEK, Jisun	Ph.D. Columbia Univ.	Industrial Organization Applied Microeconomics	
KIM, Jeongyeol	Ph.D. Univ. of Arizona	Experimental Economics Competition Policy	Assistant Professor
YOON, Chung Eun	Ph.D. Univ. of Notre Dame	Innovation, Labor Development Economics	
AHN, Sanghoon	Ph.D. Massachusetts Institute of Technology	Economic Growth, Development International Economy	Adjunct Professor
CHUNG, Chul	Ph.D. Univ. of Michigan	Economics, Trade	
KIM, Hocheol	Ph.D. Seoul National Univ.	International Trade	
LEE, Hwa Ryung	Ph.D. Univ. of California Berkeley	Economics	
CHOI, Kyonglim	M.A. Univ. of Connecticut	International Trade	Visiting Professor
KANG, Youngchul	Ph.D. Univ. of Pittsburgh	Regulatory Reform	

Public Finance and Social Policy

Name	Education	Expertise	Position
CHOI, Seulki	Ph.D. Univ. of North Carolina at Chapel Hill	Demography Social Development	Professor
KIM, Taejong	Ph.D. Massachusetts Institute of Technology	Public Finance	
LEE, Juho	Ph.D. Cornell Univ.	Labor Economics Science and Technology Policy	
SHIN, Jaeun	Ph.D. Texas A&M Univ.	Health Economics Labor Economics	
KIM, Joeun	Ph.D. Pennsylvania State Univ.	Social Demography Gender, Work	Assistant Professor
PARK, Jinseong	Ph.D. Univ. of Tennessee, Knoxville	Public Economics, Labor Economics, Policy Evaluation	
SUH, Sangmok	Ph.D. Stanford Univ.	Economy, Social Welfare Policy	Adjunct Professor
PAIK, Sungjoon	Ph.D. Harvard Univ.	Education Policy, Technical Vocational Education and Training	Visiting Professor
PARK, Wonjoo	Ph.D. Indiana Univ. Bloomington	Economics	

Regional Development and Environmental Policy

Name	Education	Expertise	Position
JOO, Yumin	Ph.D. Massachusetts Institute of Technology	Regional Development	
KIM, Yeongjae	Ph.D. Georgia Institute of Technology	Energy Policy Environmental Economics	Associate Professor
LEE, Jongyearn	Ph.D. Univ. of Michigan	Industrial Organization Applied Microeconomics	
CHO, Man	Ph.D. Univ. of Pennsylvania	Urban Economics Real Estate Finance	Professor Emeritus
KIM, Kangsoo	Ph.D. The Univ. of Leeds	Urban and Infrastructure Planning	
KIM, Sunwoong	Ph.D. Massachusetts Institute of Technology	Urban Planning Human Capital	
LEE, Sangkeon	Ph.D. Virginia Polytechnic Institute and State Univ.	Urban Engineering	
PARK, Yongduk	Ph.D. Emory Univ.	Economy of Energy	Adjunct Professor
SOHN, Jungwon	Ph.D. Univ. of California Los Angeles	Regional Development	
PARK, Soojin	Ph.D. KDI School of Public Policy and Management	Public Investment	
KIM, Hyunseok	Ph.D. Iowa State Univ.	Public Economics	

Public Administration and Leadership

Name	Education	Expertise	Position
KIM, Soonhee	Ph.D. Univ. at Albany, State Univ. of New York	Public Management and Governance Human Resources Management	
LEE, Taejun	Ph.D. Univ. of Tennessee, Knoxville	Digital Government Innovation Science Technology Innovation for SDGs	Professor
LIU, Cheol	Ph.D. Indiana Univ.	Budgeting and Public Financial Management	
LEE, Junesoo	Ph.D. Univ. at Albany, State Univ. of New York	Public Management	Associate Professor
KANG, Minsung	Ph.D. Univ. at Albany, State Univ. of New York	Public Management Administrative Ethics	Assistant Professor
PARK, Angela	Ph.D. Univ. of Kansas	Public Management Local Sustainability	

Strategic Management

Name	Education	Expertise	Position
CHO, Yooncheong	Ph.D. Rutgers Univ.	E-Marketing, Customer Relationship Management	
CHOI, Taehee	Ph.D. Ohio State Univ.	Accounting, MIS	
JUNG, Kwon	Ph.D. Univ. of Illinois, Urbana-Champaign	Marketing	Professor
LEE, Seungjoo	D.B.A. Harvard Univ.	Strategic Management Entrepreneurship & Innovation	
JUN, Yongwook	Ph.D. Massachusetts Institute of Technology	Business Management	Visiting Professor
MICHELL, Anthony	Ph.D. Univ. of Cambridge	Change Management	

Global Governance and Political Economy

Name	Education	Expertise	Position
RHEE, Inbok	Ph.D. Univ. of California San Diego	Political Economy of Development	Associate Professor
KIM, Seungjun	Ph.D. Univ. of Maryland at College Park	Political Science International Relations	Assistant Professor
LEE, Dongil	Ph.D. New York Univ.	Political Science	
KOH, Youngsun	Ph.D. Stanford Univ.	Economics	Adjunct Professor
KIM, Byoungjoo	Ph.D. Massachusetts Institute of Technology	International Relations Political Science	Visiting Professor
PARK, Jongdae	Ph.D. Kyungnam Univ.	International Development Political Science and Diplomacy	

Intellectual Property and Innovation Policy

Name	Education	Expertise	Position
CALBOLI, Irene	M.A. Univ. of London	Law, Intellectual Property	
DUTFIELD, Graham	Ph.D. Univ. of Oxford	Intellectual Property	
PURI, Kamal	Ph.D. Australian National Univ.	Law, Intellectual Property	Adjunct Professor
ERSTLING, Jay	Ph.D. Cornell Univ.	Law, Intellectual Property	
MERCURIO, Bryan	Ph.D. Macquarie Univ.	Law, Intellectual Property	
CHOE, Kyongsoo	Ph.D. Korea Univ.	International Business Administration, Law	Visiting Professor of Practice

Data Science for Public Policy and Management

Name	Education	Expertise	Position
KIM, Byungkoo	Ph.D. Univ. of Michigan	Data Science International Political Economy	Assistant Professor
PARK, Jaehyuk	Ph.D. Indiana Univ.	Computational Social Science, Complex System, Data Science	

Language

Name	Education	Expertise	Position
PLUMB, Christopher	Ph.D. Univ. of Manchester	English, Academic Writing	Professor of Practice
YUN, Haiyoung	M.A. Univ. of London	Public Policy, Public Management	
CHOI, Sujeong	Ph.D. Yonsei Univ.	Korean Language	
LEE, Gina	M.A. Yonsei Univ.	English, Academic Writing	
LEE, Giyoung	M.A. Hankuk Univ. of Foreign Studies	English, Academic Writing	Assistant Professor
LEE, Hyunjung	Ph.D. Yonsei Univ.	Korean Language	
CHOI, Hyeyoon	M.A. Univ. of Hawaii	English, Academic Writing	
HWANG, Saehee	Ph.D. Seoul National Univ.	English, Academic Writing	Lecturer
RYU, Juhyun	M.A. Ewha Womans Univ.	Korean Language	

MPP

MASTER OF
PUBLIC POLICY



Program
Overview

◀ Watch Video



MASTER OF PUBLIC POLICY

The Master of Public Policy (MPP) program aims to cultivate experts with the skills to formulate optimal policy directions and strategic responses based on in-depth analyses of current economic and social issues. This program enhances critical thinking and decision-making abilities in policy areas concerning macroeconomics and finance, trade and industry, fiscal and social affairs, regional development and the environment. Accredited by NASPAA in 2014, the MPP program is well known at home and abroad for the first-class multidisciplinary policy education provided by the top-notch faculty. The students of this program represent more than 140 countries around the world and have a diverse array of experiences as civil servants and employees of public corporations and organizations, private entities, NGOs, and media as well as general students, among others. This program provides students with a new field of knowledge and expertise in a changing global environment.

Academic Goals

- To encourage critical thinking in developing new ideas and analyzing complex issues
- To deepen understanding of market mechanisms
- To improve decision-making skills for effectively addressing policy issues

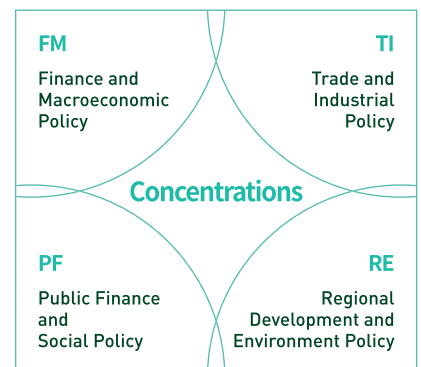
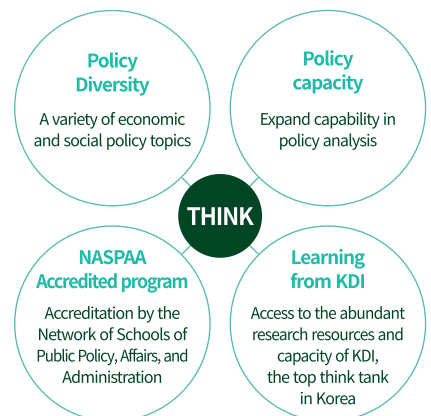
Program Characteristics

- Strengthening policy expertise in covered economic and social fields
- Utilizing the wealth of research resources and capabilities of KDI, Korea's top think tank

Core Courses

- Quantitative Methods
- Analysis of Market and Public Policy

What is MPP?



* DS (Data Science for Public Policy and Management) can be additionally selected.

MPP 2014
BANTA, Rigoberto Jr. Dator
Philippines

UNESCO Asia-Pacific
Centre of Education for
International Understanding

The knowledge, skills and attitude I have learned from KDI School has been useful in tackling my professional activities. **Always looking at an issue from different standpoints is an important asset that I have acquired as well, thanks to KDI School.** Utilizing the global alumni network has been very useful to me as I implement development projects in different countries around the world.

MPP 2018
OGUNJOBI, Olanjani Samuel
Belize

Directorate General for Foreign
Trades and Immigration /
Former World Trade Organization
Young Professional

There are so many opportunities, so many things to learn, so much networking at KDI School. I always refer to my 3 years in South Korea as the best time of my life. One thing that KDI School has better than the others is the library. KDI School has a beautiful library with amazing resources, and we can get any books that we might want right from the library, which is exemplary. The professors are always so insightful and helpful too. Not just because of their work and policy-making experience, but also because **they guide our thoughts as we make critical decisions or critical policy recommendations during various class activities.**

**Finance and
Macroeconomic
Policy**

Goal To provide a firm grounding in theories and policies and develop practical knowledge and analytical skills in the fields of macroeconomics and finance

Content Policies and regulations on macroeconomics and finance, block chain and cryptocurrency, financial analysis, sovereign debt, accounting, etc.

Selected Courses Offered

- Central Banking: Monetary Policy Strategy
- Finance and Economic Development in Korea
- Financial Accounting
- Financial Statement Analysis and Valuation
- Fintech and Financial Regulations
- International Financial Management
- International Macroeconomic Theory and Policy
- Sovereign Debt and Financial Markets
- Banking and Financial Regulation

**Trade and
Industrial
Policy**

Goal To cultivate basic theoretical and practical skills related to international trade and industrial policy

Content Legal and institutional frameworks for international trade, the WTO, FTAs, industrial policies for state-owned enterprises and SMEs, competition policies, energy and technology-related policies, trade and development issues, etc.

Selected Courses Offered

- Analytic Methods for Trade and Industrial Policy
- Competition, Innovation and Firm Dynamics
- Economic Development in Historical Perspective
- Industrial Policy and Corporate Governance
- Industrial Digital Transformation and Trade Law
- Regional Trade Agreements and the International Trading System
- Regulation Reforms and Practices
- Trade Law and Policy in Practice
- Trade and Development

**Public Finance
and Social
Policy**

Goal To provide the know-how for managing public finance and identify policy measures for maintaining social solidarity and preventing poverty or market failure from damaging market efficiency and equity

Content State budget management and process, the fiscal role of government in the market, tax policy, gender and social development, human capital, labor, population and development, etc.

Selected Courses Offered

- Analysis of Education Policy in Comparative Perspectives
- Global Health and Development
- Labor Economics and Public Policy
- Monitoring and Evaluation for Public Policy
- Population and Development
- Public Finance and Public Policy
- Social Inequalities
- Social Security and Welfare Policy

**Regional
Development
and
Environment
Policy**

Goal To cultivate policy capacities of leaders in advanced, emerging and developing countries for responding to climate change in the 21st century and achieving low-carbon, green growth

Content Regional economic development and public policies regarding land use, real estate, transportation and agriculture, as well as environmental and energy policies, environmental impact assessments, conflict resolution between stakeholders, etc.

Selected Courses Offered

- Agriculture and Development
- Cost-Benefit Analysis for Policy Decision Making
- Climate Change Economics and Policy
- Public-Private Partnerships in Infrastructure Development
- Regional Development and Public Policy
- Smart Cities
- Global Energy Policy
- Urban and regional development

**Data Science
for Public
Policy and
Management**

Goal To cultivate innovative thinkers capable of solving public policy and management problems through the acquisition of computational thinking and data science skills

Content Fundamental thinking and skills in data science for public policy and management, data visualization, machine learning, big data, text analysis, network analysis, etc.

* The Data Science concentration can only be taken as a second concentration.

Selected Courses Offered

- Programming Fundamentals using Python
- R Fundamentals for Public Policy
- Machine Learning for Social Scientists
- Network Analysis for Social Scientists
- Data Science Capstone
- Data Literacy
- Korea's Microdata Analytics for Public Policy
- Data-Driven Foreign Aid

MDP

MASTER OF
DEVELOPMENT POLICY



Program
Overview

◀ Watch Video

MASTER OF DEVELOPMENT POLICY

Based on Korea's unique development experience, the Master of Development Policy (MDP) program aims to nurture international professionals who will contribute to the economic and social development of the world through discussion-based education focusing on international development theory and cutting-edge practices. In particular, it focuses on fostering the capabilities of future policymakers to establish and implement economic and social policies in developing countries, as well as cultivating experts on foreign aid and international development. In order to complete the MDP program, students must take a certain number of courses in the field of Sustainable Development or International Development. This program was accredited by NASPAA in 2017 for its internationalized training program and the high caliber education. In addition, it comprises various students, such as civil servants from developing countries, domestic and foreign experts, and general students, leading to the formation of the best global network and opportunities for people-to-people exchanges.

Academic Goals

- To cultivate experts on international development through empirical policy analysis and design competency development
- Enhancing the effectiveness of foreign aid through capacity building to understand and apply the environment of developing countries

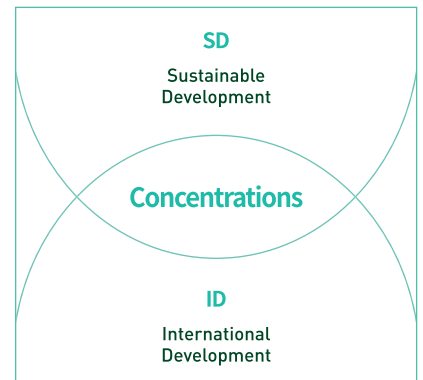
Program Characteristics

- A constantly evolving program with the latest development-related theory and practice
- Sharing KDI's 50 years of development policy advisory experience
- Composed of diverse students, including civil servants from developing countries and domestic and foreign development experts

Core Courses

- Quantitative Methods
- Introduction to Development Policy

What is MDP?



* DS (Data Science for Public Policy and Management) can be additionally selected.

MDP 2019
VILLAPANDO, Henriette
Vienne Magtibay
Philippines

UNDP Low Carbon Urban
Transport Systems in the
Philippines

My experience at KDI School amongst other things confirmed to me that it is in the top echelon of public policy institution not only in Asia but the world as a whole. **The MDP program is stacked with evidence based research driven courses which has molded and inculcated me a culture of 'evidence before decision making' that equipped me to accomplish my tasks now**, and one that I commit to rigorously apply throughout my career as a policy-maker going forward.

MDP 2018
ANGAR, Jane Mango
Kenya

Ph.D. Candidate,
University of
California, Berkeley

If you are the kind who wonders, "Why is there poverty in my country?", KDI School is the best place for you to explore the causes and solutions. Here, I had great professors and a diverse group of wonderful friends—such as a Korean public servant in Jeju City, a lady from the Central Bank of Thailand, and many others. With the benefit of rich perspectives, I rigorously learned about Korean economic development. The assistance and guidance of my KDI School friends and professors also helped me enter the Ph.D. program of my choice. KDI School accelerated my journey of becoming a political scientist.

Sustainable Development

Goal To cultivate knowledge of basic theory and practical skills related to policy issues within sustainable development and expertise in specific fields applicable to professionals within academia or development

Content Human development issues such as poverty, labor, population, education, medical care, human rights, and social change and provision of theoretical knowledge and practical skills in areas within the field of sustainable economic development, such as growth issues, productivity, technology, macroeconomics, project evaluation, environment, and energy

Selected Courses Offered

- Agriculture and Development
- Analysis of Education Policy in Comparative Perspectives
- Dispute Resolution and Negotiation
- Entrepreneurship and Innovation
- Finance and Economic Development in Korea
- Gender and Development
- Global Health and Development
- Human Capital and Economic Development
- ICT for SDGs
- Impact Evaluation Methods
- Korean Social Development
- Land Policy
- Managing and Implementing Sustainable Development
- Mind, Behavior and Public Policy
- Participatory Governance in Public Decision Making
- Productivity and Economic Growth
- Regional Development and Public Policy
- Smart Cities
- Social Development and Policy
- Social Inequalities
- Sustainable Energy Policy
- The United Nations and Sustainable Development
- Topics in Development Economics
- Topics in Political Economy of Development
- Urban and regional development
- Urban Transportation Policy

International Development

Goal To develop comprehensive capacity to understand the theory and reality of trade, investment, and international cooperation and seek alternatives through education on the relationship between international economic and foreign policy and development

Content Various fields such as official development assistance (ODA), trade, foreign direct investment (FDI), international finance, international organizations and regional issues such as national or regional research

Selected Courses Offered

- Analytic Methods for Trade and Industrial Policy
- Competition, Innovation and Firm Dynamics
- Democracy, Political Mobilization and Economic Development: Korea's Experience
- Development in the Middle East and North Africa
- Economic Development in Historical Perspective
- G20 and Global Governance
- Investment Project Valuation and Risk Analysis
- Industrial Policy and Corporate Governance
- International Macroeconomic Theory and Policy
- Korean Economic Development
- The United Nations and Global Affairs
- Topics in North Korean Economy
- Trade and Development
- Trade and Industrial Policy for the 21st Century
- Theory and Policy of International Trade

Data Science for Public Policy and Management

Goal To cultivate innovative thinkers capable of solving public policy and management problems through the acquisition of computational thinking and data science skills

Content Fundamental thinking and skills in data science for public policy and management, data visualization, machine learning, big data, text analysis, network analysis, etc.

* The Data Science concentration can only be taken as a second concentration.

Selected Courses Offered

- Programming Fundamentals using Python
- R Fundamentals for Public Policy
- Machine Learning for Social Scientists
- Network Analysis for Social Scientists
- Data Science Capstone
- Data Literacy
- Korea's Microdata Analytics for Public Policy
- Data-Driven Foreign Aid

MPM

MASTER OF
PUBLIC MANAGEMENT



Program
Overview

◀ Watch Video



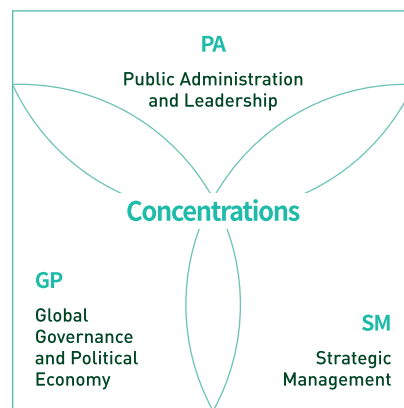
MASTER OF PUBLIC MANAGEMENT

The Master of Public Management (MPM) program aims to nurture students' strategic thinking, leadership, and comprehensive problem-solving abilities so that they can predict and effectively respond to changes in the multi-dimensional global policy environment. As the demand for administrative skills for public organization management increases, this program aims to provide the necessary competencies for future managers and cultivate high-capacity, dynamic leaders. On top of the leadership and core management capabilities of managers of government and public institutions, the program promotes comprehensive understanding and communication skills for key stakeholders in policy making (market, NPO/NGO, international relations).

The MPM program, the only prestigious educational course in Korea accredited by NASPAA in 2018, educates a variety of students, including domestic and overseas personnel from leading public and private organizations and civil servants, and provides a global educational environment with an unrivaled curriculum based on years of research.

- Academic Goals**
 - To strengthen comprehensive management capabilities in the private, public, and international sectors
 - To cultivate high-quality public manpower with the ability to establish and implement policies
- Program Characteristics**
 - A program for public sector management personnel, such as government officials and employees of public institutions
 - An interdisciplinary convergence program in public management, private business management, and international cooperation
- Core Courses**
 - Quantitative Methods
 - Public Organization and Management

What is MPM?



* DS (Data Science for Public Policy and Management) can be additionally selected.



MPM 2018
LI, Guannan
China

Ministry of
Foreign Affairs

The valuable knowledge of the international political economy and global governance that I acquired at KDI School has enabled me to look deeply into the current global political and economic situation, which is of great benefit to my economic diplomacy career. But **the School granted me far more than knowledge itself, as my capability of independent thinking, active interaction, and teamwork were also greatly strengthened.**

MPM 2018
SALEM, Mohamed Hassan
Ahmed Mohamed
Egypt

Ministry of
Finance

Studying at KDI School is impressive since the school equips students with the values, skills and intellectual discipline that will enable them to make a positive contribution to society. Through the school's commitment to the personal education of all students and opportunities for developing student's capacity, I had the chance to be a part of these opportunities through attending seminars, workshops and conferences which in turn affected my knowledge and abilities. **Being a part of KDIS means a bright future.**



Public Administration and Leadership

Goal To foster innovative public leaders who lead sustainable innovation of the government and public institutions based on digital innovation, regulatory reform, conflict resolution, communication and public relations capabilities

Content Leadership and core management skills (human resources management, organizational management, financial management) vital for government and public institution managers and cultivating comprehensive analysis, understanding, communication, and public relations skills essential for public managers in all stages of policy establishment, implementation, evaluation, and public relations

Selected Courses Offered

- Budgeting and Public Financial Management
- Change Management
- Comparative Politics: Global Perspectives on Political Institutions and Behavior
- Cost-Benefit Analysis for Policy Decision Making
- Dispute Resolution and Negotiation
- Human Resource Management in Government
- ICT for SDGs
- Leadership in Government
- Managing and Implementing Sustainable Development
- Participatory Governance in Public Decision Making
- Performance Management and Measurement in the Public Sector
- Policy Process Analysis
- Public Investment Management
- Public Management Innovation and Reform

Strategic Management

Goal To cultivate strategic management mindset and leadership - core qualities for managers of government and public institutions - and foster public managers who lead innovation in the government and public sectors based on their understanding of the market

Content Balanced acquisition of strategic thinking, entrepreneurship, problem-solving skills, management innovation techniques and case studies, and international management capabilities

Selected Courses Offered

- Customer Relationship Management
- Entrepreneurship and Innovation
- Ethical Leadership in the Age of Sustainable Development
- Financial Statement Analysis and Valuation
- Grand Strategy and Statecraft
- International Business Management for Policy Makers
- Marketing in the Public Sector
- Strategic Management

Global Governance and Political Economy

Goal To cultivate the intellectual and analytical skills demanded of next-generation leaders with the ability to effectively seek alternatives and solve problems in a rapidly globalizing policy environment

Content Education in theories and policies in global governance, development, and political economy with an interdisciplinary approach and methodology

Selected Courses Offered

- Comparative Politics: Global Perspectives on Political Institutions and Behavior
- Democracy, Political Mobilization and Economic Development: Korea's Experience
- G20 and Global Governance
- Global Governance: Issues, Divisions & Cooperation
- International Political Economy
- International Relations and Economic Globalization in 21st Century
- The United Nations and Sustainable Development
- Political Economy of Development

Data Science for Public Policy and Management

Goal To cultivate innovative thinkers capable of solving public policy and management problems through the acquisition of computational thinking and data science skills

Content Fundamental thinking and skills in data science for public policy and management, data visualization, machine learning, big data, text analysis, network analysis, etc.

* The Data Science concentration can only be taken as a second concentration.

Selected Courses Offered

- Programming Fundamentals using Python
- R Fundamentals for Public Policy
- Machine Learning for Social Scientists
- Network Analysis for Social Scientists
- Data Science Capstone
- Data Literacy
- Korea's Microdata Analytics for Public Policy
- Data-Driven Foreign Aid

MIPD

MASTER IN
INTELLECTUAL PROPERTY AND
DEVELOPMENT POLICY



MASTER IN INTELLECTUAL PROPERTY AND DEVELOPMENT POLICY

As the world's first master's degree program that combines intellectual property and development policy, the Master in Intellectual Property and Development Policy (MIPD) program provides a curriculum which focuses on intellectual property (IP) related policies, patents, copyrights, trademarks among others. This program provides students with a comprehensive understanding of theories and practices so that they can understand development policies and intellectual property rights, as well as the relationship between them and how they change in the era of globalization. Through this program, we aim to cultivate experts in the field of intellectual property rights and development policy with a global perspective and expertise. This program has been jointly prepared by the World Intellectual Property Organization (WIPO), an international organization under the UN focusing on intellectual property, Korean Intellectual Property Office (KIPO), and the Ministry of Culture, Sports, and Tourism, of Republic of Korea (MCST), so that students can access high-quality lectures from experts affiliated from notable institutions.

Academic Goals

- Acquire broader and deeper knowledge of the principles and sources of international intellectual property law and understanding of how these are changing as a result of globalization
- Understand the framework for analyzing policy making for economic growth and sustainable development
- Appreciate the role of IP as a tool for development
- Develop the capacity to evaluate and examine various implications of IP laws and policy for socio-economic development
- Obtain a global perspective and professional expertise in IP and Policy Development
- Demonstrate the capacity to write a research paper on IP and development issues satisfying the requirements of objectivity, structure, analytical reasoning and independence

Program Characteristics

- The world's first MIPD focusing on intellectual property and development
- The curriculum will focus on IP areas such as International Intellectual Property Law and Policy, Copyright and Related Rights, Patents and Innovation
- Graduation in 1 year if required courses are taken according to the academic calendar

Curriculum

Trimester 1 Spring (Feb. ~ Apr.)	Trimester 2 Summer (May ~ Jul.)	Trimester 3 Fall (Sep. ~ Nov.)
Introduction to Development Policy	Trademarks, Designs and Geographical Indications	IP Management and Practice
International Intellectual Property Law and Development	Patents and Innovation	Korean Economic Development
Copyright and Related Rights		
Korean Language and Culture 1 (International Only) / Language of Public Policy and Management (Domestic Only)	IP, Emerging Issues and Sustainable Development	Supervised Research Project

※ List of courses are subject to change

※ 3 additional elective courses must be taken

What is MIPD?

The world's first-ever MIPD

The world's first MIPD focusing on intellectual property and development

Intellectual Property and Development Policy

Develop the capacity to evaluate and examine various implications of IP laws and policy for socioeconomic development

INNOVATE

KDIS-WIPO-KIPO-MCST Joint Master's Program

Specialists teach in the MIPD program

Global perspective and professional expertise

Obtain a global perspective and professional expertise in IP and policy development

Intellectual Property and Development Policy

Goal To foster, through a joint course with the World Intellectual Property Organization (WIPO), an international organization under the United Nations with 193 member states, experts with an education in development and intellectual property policies and cases from various perspectives of developed and developing countries while drawing from Korea's development experience

Content Broaden the spectrum of development fields to the field of intellectual property, secure curriculum diversity through detailed education related to intellectual property within the fields of Korean development experience, and enhance internationalization capabilities through cooperation with international organizations

Target Selecting and training excellent human resources in the public and private sectors in WIPO member countries

Selected Courses Offered

- Copyright and Related Rights
- Korean Economic Development
- IP, Emerging Issues and Sustainable Development
- Patents and Innovation
- International Intellectual Property Law and Development
- IP Management and Practice
- Trademarks, Designs and Geographical Indications

2021 MIPD

Recardina Liliyana da Silva
Timor-Leste



▲ Watch Video

KDIS offered me a desire field. I have always wondered what the intellectual property is and how it will help my country's development. At the same time **my country does not have IP system in place which has motivated me to learn and become expert in this field so I can contribute to my country in the future.**

2021 MIPD

Kim Sang-eun
The Province of Chungnam, Republic of Korea

Although IP may be a relatively unfamiliar field, I highly recommend giving it a try if you are interested, as the curriculum at KDIS is excellently designed. **IP is an indispensable field in future industries, making its prospects very promising.** Moreover, KDIS's MIPD program is the only IP program conducted in English in Korea, allowing direct networking opportunities with WIPO. It will be of great assistance to those aspiring to work in the international IP-related field in the future.



Ph.D.

PROGRAMS

Ph.D. PROGRAMS

KDI School offers Ph.D. programs in Public Policy, Development Policy, and Public Policy and Management. The goal of the Ph.D. programs is to train highly qualified candidates able to produce cutting-edge research in their chosen field.

Curriculum Tailored to Individual Research Topics

- KDI School encourages Ph.D. students to take the initiative in shaping their own course of study once they complete the required courses during the first 1~2 years.

Faculty Involvement

- KDI School also encourages Ph.D. students to collaborate with the faculty on research projects. Along with an emphasis on supervised research courses, KDI School provides an environment where students work closely with professors.

Target Students

- KDI School selects applicants with demonstrated potential for research. Applicants are also expected to have a research topic firmly in hand.

Major Courses

Ph.D. in Public Policy (Full-time)

- Foundations of Public Policy
- Econometrics I&II
- Microeconomics
- Game Theory in Public Policy
- Ph.D. Colloquium

Ph.D. in Development Policy (Full-time)

- Foundations of Public Policy
- Econometrics I&II
- Microeconomics
- Game Theory in Public Policy
- Development Economics: Field Experiments
- Development Economics: Labor and Development
- Ph.D. Colloquium

Ph.D. in Public Policy and Management (Part-time / Korean-English Bilingual Program)

- Foundations of Public Management
- Advanced Research Methodology I&II
- Qualitative Methods
- Policy Design and Evaluation
- Ph.D. Colloquium
- Academic Writing
- Policy Presentation and Communication
- Seminar Series

ASCEND

Tailored curriculum

Take the initiative in shaping their own course of study once they complete the required courses during the first 1-2 years

Faculty involvement

Collaborate with the faculty on research projects

Target students

Applicants with demonstrated potential for research

DP

Development Policy

Programs

PP
Public Policy

PPM
Public Policy and Management

Public Policy 2016

ULLAH, Inayat
Pakistan

Assistant Professor, National University of Sciences and Technology (NUST)

When I was studying at KDI School, I did not realize the significance of the KDIS brand in the academic and research world mainly because we had to go through challenging course work and pressing deadlines. However, **soon after graduation, I realized the value of the KDIS brand, especially whenever we applied for academic or research positions.** The innovative skills, courses, and research techniques offered at KDIS are instrumental in my research career. For instance, KDIS offers funding for potential research projects, facilitates its Ph.D. alumni in enhancing their network, and offers remote services to its graduates to continue in their own fields. Also, I am very indebted to KDIS School for its tremendous support towards its graduates.

GLOBAL NETWORK



International Exchange and Career Development Programs

26p

Development Research and International Cooperation

28p

Student & Alumni Profile

34p

KDI School Network

38p

International Exchange and Career Development Programs

GMP and Exchange Program

The GMP program is a 1+1 study abroad program for Korean mid-level government officials and private sector managers. The first year of study is completed at KDI School while the second year is spent at a partner institution overseas. If a student chooses to be a part of a master's program at the partner institution, he or she will be eligible to receive dual degrees, one from KDI School and another from the partner institution.

KDI School also hosts various foreign exchange programs with the aim of expanding students' international perspectives. Exchange programs provide opportunities not only to earn credits from partner schools, but also chances to receive degrees.

Mentoring

The mentoring program is intended to give students practical advice on how to develop a career. Mentors are alumni whose profession fits the student's area of interest. KDI School's alumni network is a repository of professional experience, and the school plays an important role in connecting students with alumni. Current students draw upon the alumni's expertise to help them shape their future career path.

Special Lectures on Career Development

Guest speakers are KDI School alumni members or professionals employed in various career fields. Students are offered the opportunity to obtain detailed information about their chosen field and join a network of our alumni.

Internship Opportunities

KDI School actively provides information on internship opportunities that best meet students' needs. A large number of research institutes, public organizations, and international organizations contact KDI School to offer internship opportunities to our students. The high volume of internship offers by those institutions is a reflection of the excellent quality of our academic programs and the outstanding achievements of our student body.

For International Students:

K-Water, The Korea Research Institute for Human Settlements (KRIHS), The Korea Transport Institute (KOTI), Korea Legislation Research Institute (KLRI)

For Domestic Students:

African Development Bank (AfDB), United Nations (UN), UNESCO

* The institutions and the participating students may vary.

Job/Internship Search Support and Career News

KDI School provides career information on the school website and the school bulletin boards. To help students search for jobs and internships effectively, online and offline advertisements for openings are regularly updated.



Development Research and International Cooperation

Office of Development Research and International Cooperation of KDI School is dedicated to sharing Korea's unique development experience and public policy strategies with the global community by conducting scholarly research and offering short-term training programs to development practitioners and policy officials.

Research Planning Division

This Division approves the proposals, supports the performance, and oversees the publication process of development research projects employing empirical analyses. Centering on impact evaluation, the research conducted raises awareness of using scientific evaluation as an integral tool for informed policy making for government policy-makers, practitioners, and researchers.

Research Lab

- Enhancing research productivity by consolidating research capabilities
- Establishing partnerships with other research institutes and facilitating research projects across disciplines and regions
- Strengthening linkages and optimizing synergies between education and research, fortifying KDI School's position as a research university

#	Lab	Research Field
1	Impact Evaluation Lab (IE Lab)	Impact evaluation, development cooperation, empirical analysis on social policies
2	Inclusive Finance and Growth Lab (IFG Lab)	Inclusive finance and economic development of developing countries and emerging markets
3	Experimental Lab for Public Management Research (EXPMR)	Adopting experiments in public management research
4	Governance, Leadership and Management Lab (GLM Lab)	Leadership, urban governance, and sharing economy
5	Open Government and Innovation Lab (OGI Lab)	Digital transformation, open government, public sector modernization and innovation, public communication and media ecosystem, etc.
6	Conflict and Development Lab (CaDLab)	Interplay between conflict and development
7	Dynamic Sustainability Lab (DS Lab)	Sustainability mechanism in public policy, development policy, public and private management
8	Applied Data Science Lab (ADSL)	Empirical studies on social science using data Science Methodology
9	Population Policy Lab (PPL)	Low birth rate factors, the effect of the population decline
10	Sustainable Development Lab (SDL)	International Development, Development Cooperation, Economic History
11	Gender Lab (GL)	Gender inequality in workplace, gender and infertility, Antifeminism
12	Inequality and Economic Policy Lab (IEPL)	Empirical Studies on macro change, such as Technological Change and Enterprise, Public Policy and Policy Preferences, Trade and Environment



Research Environment

- Transforming the city of Sejong into a research-conducive hub by offering public policy forums, young researcher Program, and opportunities to participate in diverse research projects

Research Projects

- **Research Projects on Impact Evaluation of Development Cooperation**
- Analyzing and evaluating the results of development cooperation projects using randomized controlled trials, thereby contributing to evidence-based policy-making
- Striving to broaden the scope of research and its dissemination by partnering with international organizations, including DIME (Development Impact Evaluation)

KDI School Research Projects

- Supporting research projects on a variety of subjects, including but not limited to, macroeconomics, finance, industrial policy, regional development and environment
- Improving research quality and promoting research activities through rigorous performance management

Research on The Korean Socioeconomic Development Experience

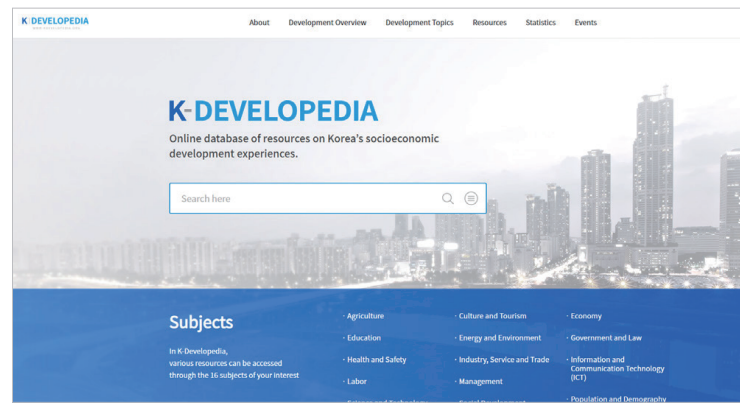
This Division focuses on conducting research on the Korean socio-economic development experience. Emphasis is placed on providing development scholars' and practitioners' insight into Korea's innovative experiences in reforming its public policies and public management practices, utilizing case studies and diverse learning modules.

A total of 148 case studies in eight thematic areas, financed by the Ministry of Economy and Finance, were collected through the Knowledge Sharing Program (KSP) from 2010 to 2016. Based on these case studies, 18 e-learning products have been created, which are managed by this Division.

Knowledge Partnerships with International Organizations and Research Institutes

Knowledge Partnerships with International Organizations and Research Institutes

Knowledge partnerships with international organizations and research institutes incorporate joint research projects on development strategies and models from Korea and other countries. Rigorous research projects and knowledge sharing programs on topics of global concern, such as achieving the Sustainable Development Goals, are launched in collaboration with the World Bank, the African Development Bank, the Asian Development Bank, the Inter-American Development Bank, the Global Delivery Initiative, and the SDG Academy of the United Nations Social Development Network (UN SDSN). Sharing and disseminating this knowledge and research findings to developing countries is the other objective of these partnerships.



Major Projects

- Management for Development Results (MfDR) Partnership Program with the AfDB, ADB and IDB
- Joint Research Projects on Korea's Development Experience
- Academic Conferences and Seminars with international organizations and government agencies
- Research Project on International Cooperation Policy

K-Developedia (kdevelopedia.org)

K-Developedia is an online repository of data and resources on Korea's development experiences. It creates, organizes, processes, and provides knowledge resources and contents related to economic and social development experiences of Korea, allowing the international community to more readily access information on Korea's development model. K-Developedia has accumulated approximately 38,000 resources that have been accessed by 900,000 users from 200 countries all over the world.

Commissioned Research and Project

- Kurdistan Regional Government Policy Consultation Project (2020-2025), Non-Degree Program (2021-2025)
- Other researches on Korean ODA, governance, and development cooperation (6 projects)

International Cooperation Division



This Division designs and executes various short-term training programs on an invitational basis. The signature training programs offered annually are as follows.

Global Leadership Program (Non-Degree Program)

This flagship program was launched after Korea's hosting of the G20 Leaders' Summit in 2010. This non-degree, leadership course addresses the G20 priority agenda issues, while providing an opportunity for participants to engage in policy discourse from a global perspective. The program covers G20 development agenda issues, Korea's development experience, and some of Korea's notable best policy practices. Speakers utilize case studies with a particular focus on policy coordination and implementation strategies. This program is held several times during the course of one year and targets mid-level government officials working in the areas of G20 development matters.



Global Development Learning Network (GDLN)

The GDLN, a World Bank initiative, is a unique partnership of over 88 affiliates in approximately 61 countries. This network of affiliates from around the world is committed to advancing Sustainable Development Goals through knowledge sharing. KDI School utilizes the most up-to-date technology to deliver programs in a timely and effective manner to the GDLN community. KDI School offers a series of programs through the GDLN as noted below.

Blended Learning Programs

GDLN Korea offers Blended Learning Programs, comprised of e-learning modules, live streamed Zoom seminar sessions, and concluding with a face-to-face training in Korea. The subject areas vary but focus on Korea's development experiences, lessons learned, and best practices.

Virtual Programs

The GDLN offers programs virtually throughout the year utilizing the KDI School's e-education platform and live streaming on Zoom on diverse development subject matters, such as climate change, human capital development policy, and fiscal soundness. These programs are available to the GDLN network and individuals with relevant professional or academic interests. The Capacity Building Center also shares some of its most popular programs to members of the GDLN community virtually, providing a value-add for training program participants and those who can connect virtually.

Optional Value-Add

As part of KDI and KDI School's mission to promote knowledge-sharing and disseminate information, if agreeable to partner countries, specific sessions of suggested programs can be simultaneously broadcast online to further expand the target audience, which could include additional members of the partner countries or other relevant parties or organizations.

For more information about the GDLN, please visit the following websites.

- GDLN Global: www.gdlnglobal.org
- GDLN Korea: www.gdln.or.kr

Knowledge Partnership with The World Bank Group

Strategic partnership between the World Bank Group and KDI School was forged in 2002 with two main objectives: capacity building and knowledge sharing for developing countries. The World Bank and KDI School play key roles in contributing to the global initiatives of international development by collaborating on comparative case studies on Korea's development experience and current development issues.

This partnership has organized more than 130 international knowledge sharing events since its inception in 2003.



Capacity Building Program for Effective Public Policy-Making & Educational Cooperation with Guatemala

This program aims to support the operation of a regional higher education institution for policy education, the ERPPD (Escuela Regional de Políticas Publicas para el Desarrollo), in collaboration with the University of San Carlos of Guatemala. KDI School has been offering short-term training programs for public officials and experts of affiliated institutes that conduct education and research on socio-economic development in the Central American region to enhance their professional capacity of public policy.

Educational Cooperation Project for Reinforcing Public Diplomacy

This project is a partnership with distinguished universities abroad that aims to provide direct support for the Korea Studies Program. Through this project, KDI School intends to expand and reinforce a network of scholars and experts on Korea who can help promote mutual understanding between Korea and the global community through research projects and outreach activities.



	Training Topics
General Topics	<ul style="list-style-type: none"> • Korean Economic Development Experiences • Role of Legislation in Support of Economic Development in Korea
Sectoral Topics	<ul style="list-style-type: none"> • Government Reform & Good Governance • Korean e-Government • Regulatory Reform System and Policy Coordination • Anti-Corruption Reform and Governance • Public Enterprise Management Reform and Its Privatization • Human Resource Development in Korea • Public Sector Training and Performance Management • Leadership and Change Management • Conflict Resolution and Negotiation • Korea's National Competitiveness: Key Challenges and Prospects <p>* Other topics are available upon request.</p>
Pre-Learning	If requested by the partner organization, participants can be provided with resource materials and learning packets prior to the start of their given program via the e-education platform.
Cultural Activities	Customized training programs also include visits to Korea's historical sites, which help enhance the participants understanding of the social and cultural aspects of Korean society.
Field Study Trips	Training programs typically include field study trips to major industrial sites and relevant institutions in Korea, during which issue-related roving seminars are presented. Field study trips include visits to government ministries, local government offices, national research institutes, and industrial complexes located throughout the country. The site visits provide an opportunity for the participants to acquire information directly from specific sector-focused organizations or agencies for more in-depth knowledge-sharing opportunities.
Action Plan Presentations	<p>Program participants may be requested to prepare an Action Plan Report on their countries' efforts in formulating economic development policies and strategies, incorporating their learning from the training program. This is a supervised process that is integrated from the start of the program to the program's conclusion.</p> <div style="display: flex; justify-content: space-around; align-items: center;"> <div style="border: 1px solid black; border-radius: 15px; padding: 5px; background-color: #006666; color: white; text-align: center;">Action Plan Guideline Session: Grouping Topic Selection</div> <div style="font-size: 20px; margin: 0 10px;">➔</div> <div style="border: 1px solid black; border-radius: 15px; padding: 5px; background-color: #006666; color: white; text-align: center;">Action Plan Consulting: Group Study, Consultation</div> <div style="font-size: 20px; margin: 0 10px;">➔</div> <div style="border: 1px solid black; border-radius: 15px; padding: 5px; background-color: #006666; color: white; text-align: center;">Action Plan Presentation: Group Presentation, Review</div> </div>

Capacity Building Division



Global Capacity Building & Knowledge Sharing Programs, KOICA Programs

This Division carries out tailored short-term training programs for partner countries and government officers that are designed to enhance the participants' ability to analyze socio-economic policy issues by expanding their policy-making perspectives. Thematic program topics include Korea's development experiences in various policy sectors, including but not limited to economic development policy, infrastructure policy, public-private-partnerships, human resources development, education, ICT, e-government, public health, environment, and anti-corruption. Programs vary in length and content, depending on the needs of the partner countries, but can include blended learning methodologies including e-learning modalities, action plan learning, or project-based learning programs.

These programs are intended to support partner countries and government officials in developing countries by strengthening their professional capacity on policy issues through knowledge sharing and action plan learning. The Division has experience working with partner institutions from a wide range of countries, including Bangladesh, India, Saudi Arabia, Sri Lanka, Thailand, Uzbekistan, among others.

Through its partnership with the Korea International Cooperation Agency (KOICA), the Capacity Building Division operates numerous capacity building programs for selected partner countries. These programs are multi-year commitments and designed to meet the learning needs in policy priority areas of partner countries. Current and previous partner countries include Colombia, Iraq, Mongolia, Morocco, Laos, Philippines, Uganda, Uzbekistan, among others.

Student & Alumni Profile

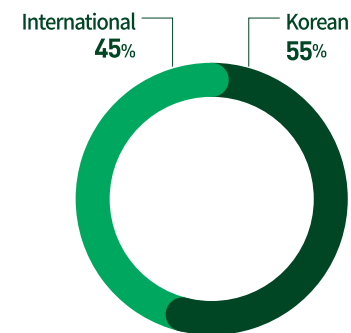
The students of KDI School of Public Policy and Management consist of Korean students working in various fields, such as government ministries and local government officials, public institutions, corporations, finance, media, and NGOs, but there are also foreign students who are elite civil servants in key government ministries across 141 countries, creating synergy effect. We contribute to forming a solid global network by allowing students to interact and collaborate in their respective fields of activity, even after graduation. In particular, high-level overseas alumni who are the vice-minister or higher are actively playing the key roles in promoting national development from all walks of life.

Diverse Alumni Composition

- A global alumni network with around 7,100 alumni (from 142 countries) graduated since the establishment of the school
- Function as key human resources for building relationships with developing countries through forming a network with core government officers and supporting overseas expansion of domestic companies

2022 Admitted Student Profile

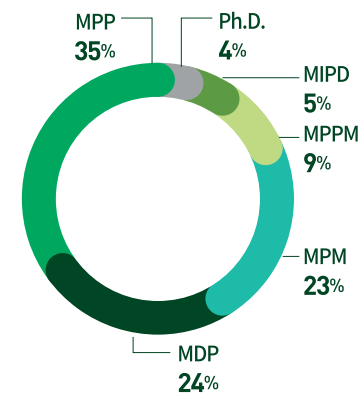
Admitted Students



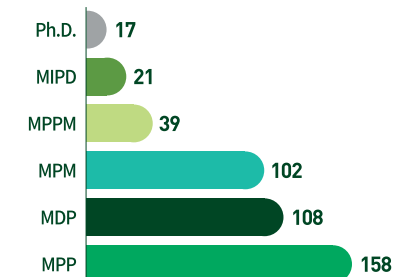
Number of Admitted Students



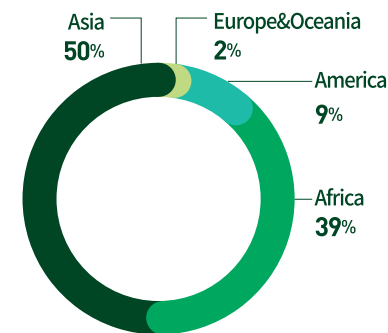
Students by Major



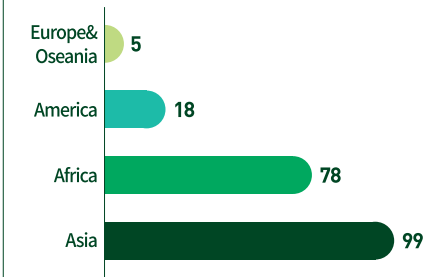
Number of Students by Major



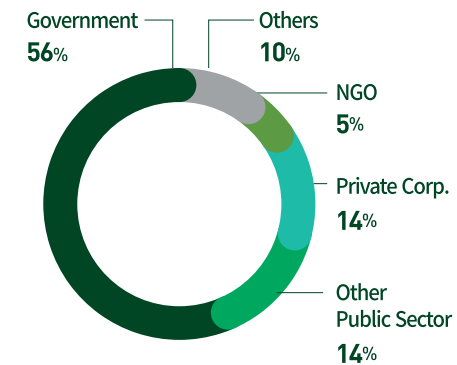
Int'l Students by Continent



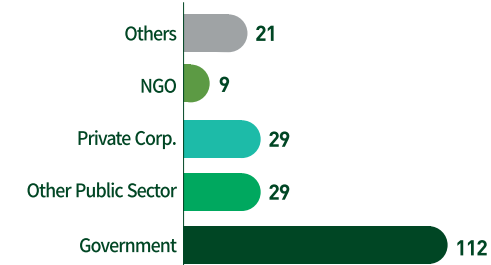
Number of International Students by Continent



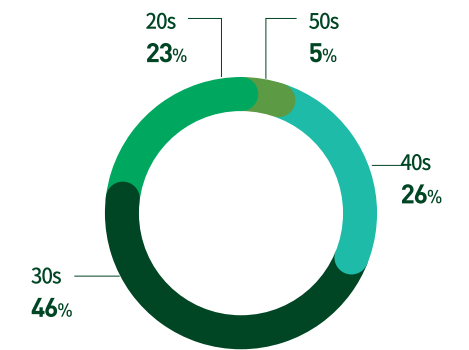
Int'l Students by Affiliation



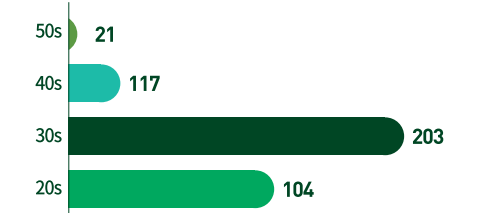
Number of International Students by Affiliation



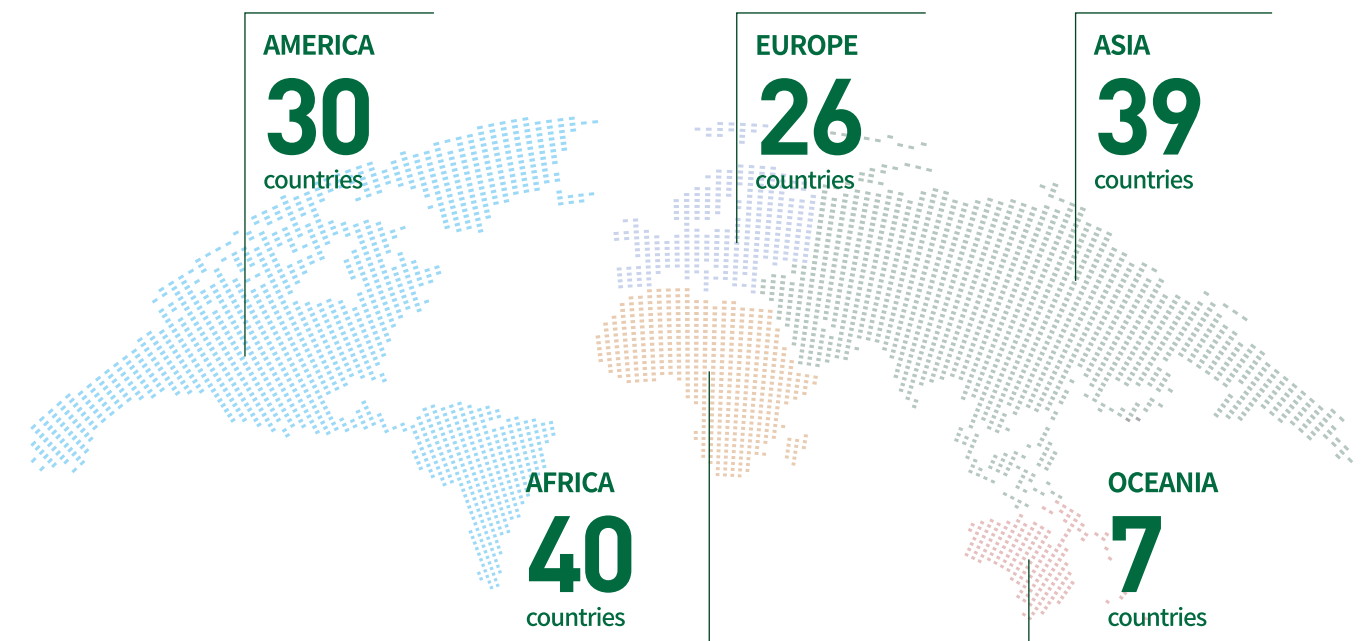
Int'l Students by Age



Number of International Students by Age



International Alumni Distribution (1998-2023)



Alumni Categorized by Nationality

(1998~2023)

Country	Total	Country	Total	Country	Total
OCEANIA					
Fiji	9	Lao PDR	53	Haiti	3
Papua New Guinea	5	Afghanistan	52	Suriname	3
Solomon Islands	4	Malaysia	50	Argentina	2
Australia	3	Kyrgyzstan	42	Venezuela	2
New Zealand	3	Thailand	42	Antigua and Barbuda	1
Kiribati	2	Sri Lanka	34	Barbados	1
Nauru	1	Bhutan	32	Trinidad and Tobago	1
EUROPE			AFRICA		
Russia	25	Maldives	26	Ethiopia	92
Czech Republic	21	Azerbaijan	16	Ghana	78
Romania	11	Iran	16	Tanzania	54
Georgia	10	Tajikistan	13	Malawi	47
Slovakia	10	Palestine	10	Nigeria	46
Lithuania	8	Timor-Leste	10	Kenya	41
Hungary	7	Turkmenistan	10	Gambia	35
Ukraine	7	Yemen	9	Uganda	35
Bulgaria	5	Republic of Turkiye	7	Zimbabwe	34
Serbia and Montenegro	5	Armenia	6	Somalia	32
Albania	4	Jordan	6	Cameroon	31
Moldova	4	Japan	3	Egypt	31
Bosnia-Herzegovina	3	Israel	2	Liberia	31
Serbia	3	Brunei	1	Rwanda	28
Spain	3	Oman	1	Algeria	18
Belarus	2	Singapore	1	Cote d'Ivoire	14
Greece	2	Taiwan	1	Eritrea	14
Poland	2	AMERICA			
United Kingdom	2	Colombia	27	Zambia	14
Belgium	1	Mexico	26	Botswana	12
Croatia	1	Peru	25	Morocco	12
France	1	United States of America	23	Sudan	11
Italy	1	Ecuador	20	Sierra Leone	9
Latvia	1	Brazil	19	South Africa	9
Netherlands	1	El Salvador	19	Burundi	8
Sweden	1	Guatemala	19	Congo, Democratic Republic	7
ASIA			Tunisia	7	
Indonesia	155	Dominican Republic	18	Madagascar	6
Cambodia	115	Belize	16	Namibia	6
Vietnam	109	Canada	16	Mozambique	4
Myanmar	106	Honduras	12	Mali	3
China	98	Jamaica	9	Senegal	3
Uzbekistan	86	Costa Rica	8	South Sudan	3
Pakistan	77	Nicaragua	8	Burkina Faso	2
Bangladesh	69	Bolivia	7	Gabon	2
Philippines	69	Chile	5	Swaziland	2
Mongolia	67	Grenada	5	Togo	2
Iraq	64	Guyana	5	Angola	1
Kazakhstan	57	Paraguay	5	Chad	1
India	53	St. Lucia	5	Congo	1
		Panama	4	Lesotho	1
		Bahamas	3	KOREA 4,224	

[1998~2023] Around 7,100 alumni from 142 countries

Alumni Events



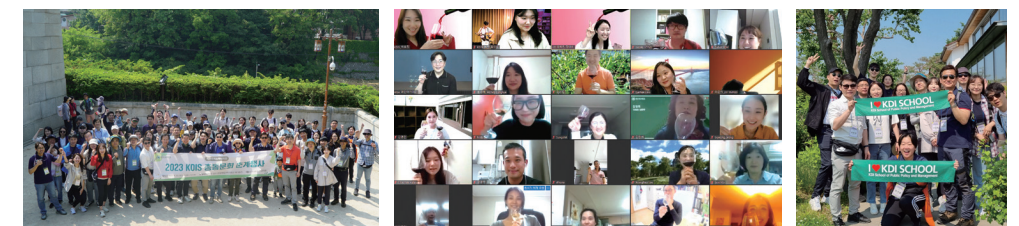
Alumni Knowledge Dialogue

Every year, to share knowledge between students and alumni, we hold a discussion forum with alumni from key ministries in various countries to discuss major global issues and other current issues in each country. In addition, we provide support to allow participants to visit domestic institutions relevant to them to promote cooperation with Korea.



Local Workshops at Home and Abroad

We operate workshops in Korea and abroad to promote exchanges between alumni in their respective countries and our students. In these workshops, they can take time to share excellent essays selected from the contest and discuss world issues. Through this, we contribute to the cultivation of global leaders by motivating participants to achieve their global goals.



Korean Alumni Events & Forums

The Korean alumni association annually holds a spring event, such as history tours and outings in the suburbs of Seoul, to build cultural literacy, promote friendship, and strengthen the network. Also, a knowledge forum is held bimonthly to discuss current global issues and expand knowledge horizon.



Annual Year-End Event

The domestic alumni association holds an Annual Year-End Event every year to provide a place for intellectual exchange between alumni and strengthen the network among alumni, such as reflecting on the memories they made together and closing out the year.

KDI School Network

KDI School of Public Policy and Management is building strategic overseas partnerships (with 82 institutions in 28 countries), which is the largest project in Korea for a single graduate school. Through the close network created over the past 26 years with the government ministries of various countries, international organizations, and leading overseas educational institutions, including universities, we have grown as a stepping stone for students to advance into the global market. We also contribute to enhancing our nation's soft power and raising Korea's status by promoting development cooperation and public diplomacy projects.

List of Overseas Partner Institutions

China	China Development Research Foundation National Development and Reform Commission Training Center
Philippines	Development Academy of the Philippines(DAP)
Panama	Ministry of Foreign Affairs
Peru	Ministry of Foreign Affairs
Colombia	Colombia ICETEX
Sri Lanka	Sri Lanka Institute of Development Administration
Uzbekistan	Academy of Public Administration Agency for Mahallabay Working and the Development of Entrepreneurship
Int'l org.	African Development Bank Asian Development Bank Global Green Growth Institute(GGGI) Inter-American Development Bank OECD Organization of American States World Bank(WB) World Intellectual Property Organization(WIPO)
etc.	Asia Water Council Central American Institute of Public Administration(ICAP)

List of Partner Universities



Nation	Institution
	Australian National University
Australia	University of Sydney
	University of Queensland
Bangladesh	BRAC University
Belgium	Katholieke Universiteit Leuven(KU Leuven)
Brazil	University of Brasilia
Canada	University of British Columbia(UBC)
China	Chinese Academy of Governance(CAG) Fudan University
Czech	University of Economics Prague
Denmark	Aarhus University
	ESSEC Business School
France	Institut Supérieur de Commerce(ISC) Institute Supérieur de Commerce Int'l de Dunkerque
	Freie Universität Berlin
Germany	HHL Leipzig Graduate School of Management Hertie School of Governance
Italy	SDA Bocconi School of Management
Japan	National Graduate Institute for Policy Studies (GRIPS)
Kazakhstan	Academy of Public Administration Nazarbayev University
Kyrgyzstan	Academy of Public Administration
Malaysia	University of Malaya
Mexico	Universidad de las Americas, Puebla(UDLA)
Myanmar	Yangon University of Economics
Netherlands	Erasmus University Rotterdam
Philippines	Ateneo de Manila University(AdMU)
Singapore	National University of Singapore
Sweden	Jonkoping International Business School(JIBS)

Nation	Institution
	King's College in London(KCL)
	Lancaster University
United Kingdom	University of Birmingham University of Leeds University of Nottingham University of Reading
	Arizona State University(ASU) Brandeis University Cornell University Duke University George Washington University Georgetown University Hawaii Pacific University Hult International Business School Indiana University Johns Hopkins University Michigan State University New York University Pennsylvania State University Rutgers University(State University of New Jersey) Saint Louis University(SLU) Syracuse University Texas A&M University The State University of New York, Republic of Korea University at Albany, State University of New York University of California at San Diego(UCSD) University of Chicago University of Colorado at Denver University of Illinois at Urbana Champaign(UIUC) University of Kentucky University of Missouri-Columbia University of Southern California(USC) University of Washington
USA	

EXTENSIVE SUPPORT

Campus
Life

42p

Learning
Support

44p

Social
Activities

45p

Scholarship
Opportunities
for
International
Students

46p

Admissions
for
International
Students

47p



Campus Life

KDI School of Public Policy and Management is located in Sejong Metropolitan Autonomous City, an administrative complex where government ministries and national research institutes are concentrated. Built by Asia's No. 1 think tank, KDI and KDI Graduate School of International Policy, which specializes in research and education in the development and public fields, and the only research and education facility integrated campus in Korea, provides the best educational facilities and the best curriculum. Students can enjoy the opportunity to grow into global talents through KDI's in-depth intellectual know-how and world-class researchers.



Geographical Convenience

We are located in Sejong City, so it is highly accessible from anywhere in Korea. From Osong Station, a KTX station near the campus, it only takes 1 hour to reach Seoul, 2 hours to Busan, and 1 hour to Gwangju by public transportation. On weekends, we run a school bus between the graduate school and Seoul.



Eco-friendly Campus

You can enjoy a pleasant study environment at the nature-friendly campus, filled with green trees and fresh air. You can also take a walk or camp along the Geumgang River, which is just a 30-minute walk from campus, to experience the carefully planned infrastructure of Sejong City, which is leading the balanced development of Korea.



Second Campus

A second campus will be built within the Sejong City Joint Campus. It will serve as a hub for international education and research, strengthening R&D capabilities and meeting the educational needs of the public sector. Opening in August 2024, the campus aims to promote regional balanced development.



Computer Room

The computer room is open 24 hours, so students can freely use Internet services through the latest computers, and printers and scanners are provided to support students in their studies and research activities more conveniently.



Archives

We collect and preserve various records, such as graduate school publications, permanent records, audiovisual records, and donated materials. Rather than merely storing them, we support photo and video services through the archives website so that students can use them to study in various ways.



Sejong-Global-Leader-Training-Centre

Sejong-Global-Leader-Training-Centre will be completed in June 2024, with 5 stories above ground and 2 stories below ground. It is designed with en-suite single rooms only to provide students with comfortable living environments. In addition, various common spaces such as lounge, gym, video conferencing room, and multi-purpose room will be built in the Centre to enhance the living convenience.



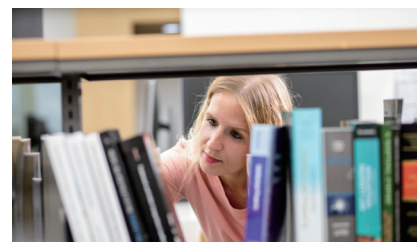
Advanced Facilities

In order to meet the demand for online and offline hybrid lectures, we have installed state-of-the-art remote lecture facilities, such as high-definition tracking cameras, large electronic blackboards, and liquid crystal tablets. We are creating the best educational environment for students in our master's or doctoral programs by building a student laboratory and learning facilities optimized for research and education, as well as providing cutting edge dormitories for on-campus students, so that they can immerse themselves in their studies.



Library

In addition to domestic and foreign books and academic journals essential for research, we hold a wide range of materials in specialized fields, such as business, economics, and policy. Moreover, since it is linked with the KDI library, students can access a vast quantity of material. By introducing an online integrated search system, we have built a digital library that allows students to easily search and use materials any time, anywhere.



Student Lab

The student lab is available for 24/7 student co-learning. Desks and lockers are provided in each student lab to increase user convenience and create an autonomous learning atmosphere.



Other Facilities

We have a lounge equipped with TV, VCR, and computer, and a variety of exercise facilities such as an indoor gym, table tennis court, grass field, basketball court, and tennis court. We believe in diversity at KDI school, so we partnered with the Ministry of Health and Welfare, the Korea Disabled People's Development Institute, and the Welfare Center for the Disabled in Sejong City to hire baristas with special needs to work at VOBISCUM, our on-campus cafe.



Learning Support

We provide educational support and programs to strengthen students' self-learning abilities and research capabilities, closely catering to the needs of individual students at the KDI School of Public Policy and Management (KDIS). Incoming students can benefit from the KDIS Online Preliminary Education (KOPE) program, which offers short preparatory courses before the start of their first semester. We also offer a number of writing, statistics, and data analysis workshops throughout the academic year, helping students to develop the essential skills necessary for academic success.



E-learning Support

- Online preliminary semester programs (KOPE) are offered to new students, aiming to enhance their fundamental learning skills in subjects such as mathematics, statistics, economics, academic writing, and research ethics.
- Online and hybrid lecture support is provided through the Learning Management System (LMS)



Writing Center

- Personalized, one-on-one consulting service for academic documents, such as assignments and dissertations, as well as job preparation materials, such as resumes, cover letters, etc
- Workshops for academic writing skills, as well as guide videos and reference materials on various topics for writing.



Innovation in Teaching and Learning

- AI-based adaptive learning systems, ALEKS and MyLab Economics, are introduced into the core curriculum as required courses to support personalized learning.
- Regular courses with innovative teaching methods, such as PBL, flipped learning, policy simulation, and learning communities with a collaboration platform



Data Analytic Support Center

- Data Analysis 1:1 consulting services provide support for research projects
- Statistical workshops on STATA, R, and Python are offered to facilitate data utilization and analysis.



Social Activities



Student Club

By encouraging voluntary participation in club activities in a variety of fields, such as sports, culture, and religion, we help students manage their stress and physical health during their academic years and foster friendships among members.



Home Visiting

Korean host families can introduce international students to Korean culture and modern family lifestyles, while simultaneously learning about the traditions of the international students.



KDIS Talent Show

KDI School hosts a representative festival where students can immerse themselves in diverse world cultures and celebrate cultural variety through performances in various genres.



Student Forums

As a forum for autonomous academic research where students of various nationalities and affiliations discuss issues by region and field, various types of academic activities, such as presentations on regional issues, special lectures by guest speakers, seminars, and workshops are autonomously held in this forum.



Buddy Program

KDI School supports autonomous intellectual and cultural exchanges between students and the establishment of a global network by connecting international students and Korean students.



International Food Festival

A festival where students from different countries can interact with each other and share their various cultures while enjoying the foods they prepared from their home countries.

Scholarship Opportunities for International Students

Global Ambassador Scholarship (GAS)

- **Eligibility**
Foreign nationals who have Bachelor's degree or higher (Master's degree for Ph.D. applicants)
- **Benefits**
Full tuition waiver and monthly stipend for most students
- **Offering period**
 - 1 Spring Admissions: Master's and Ph.D. programs
 - 2 Fall Admissions: Master's programs

Seoul G20 Global Leader's Scholarship

- **Eligibility**
Foreign nationals who have Bachelor's degree (or higher) and meet one of the followings:
 - 1 G20 nationals: Having at least 1 year of work experience in the public sector
 - 2 Non-G20 nationals: Having at least 6 years of work experience in the public sector
 - 3 Graduates in Korea Studies Program: Having a Bachelor's (or Master's) degree in Korea Studies regardless of nationality
- **Benefits**
Full tuition waiver, monthly stipend and round-trip airfare
- **Offering period**
Spring and Fall admissions for Master's program

MIPD Scholarship

- **Eligibility**
Foreign nationals who have Bachelor's degree (or higher) and meet one of the followings:
 - 1 IP related government/public officials from developing countries, least developed countries (LDCs) or countries in transition
 - 2 Applicants who are interested in IP studies *IP related work experience preferred
- **Benefits**
Full tuition waiver, monthly stipend and round-trip airfare
- **Offering period**
Spring admissions only for Master's program (MIPD)

NIIED Global Korea Scholarship

- **Eligibility**
Candidates from countries designated by NIIED (National Institute for International Education)
- **Benefits**
Full tuition waiver, monthly stipend, round-trip airfare and more
- **Offering period**
Fall admissions only for Master's programs

Special Scholarships for Government officials

- KOICA Scholarship
- Hyundai Motor Chung Mong-Koo Foundation Scholarship
- IBK-KDIS Scholarship
- FSS-KFB-KDIS Scholarship
- Sejong Global Leader Scholarship
- Colombo Plan Scholarship
- KDIS-AWC Scholarship

* Please refer to KDI School's homepage for more information on scholarship opportunities



Admissions for International Students

Admission Requirements

- For Master's program: a Bachelor's or an equivalent degree (min. of 3 years)
- For Ph.D. program: a Master's or an equivalent degree
- Eligibility requirements for scholarship (if applicable)
- Work experience preferred (particularly in public sector)

* Dual citizens with Korean nationality are not eligible for the scholarships

Application Schedule*

Procedures	2024 Spring Admission	2024 Fall Admission
Program	· Master's Program (Full/Part time) · Ph.D. Program (Full time)	· Master's Program (Full time)
Application Period	August 28 ~ September 15, 2023	April, 2024
Final Result Notification	December 1, 2023	June, 2024
Semester Start	Early February, 2024	Early September, 2024

* The schedule is subject to change.

Required Documents

NO.	Documents	Master's	Ph.D.
1	Online Application	Required	Required
2	Statement of Purpose	Required	Required
3	Official transcript from undergraduate institution(s) with grading system*	Required	Required
4	Official Diploma or Graduation Certificate from undergraduate institution(s)*	Required	Required
5	Official transcript from graduate institution(s)*	If applicable	Required
6	Official Diploma or Graduation Certificate from graduate institution(s)*	If applicable	Required
7	Two(2) Online Recommendation Letters	Required	Required
8	English Proficiency Test Score Reports**	Required	Required
9	Employment Verification***	If applicable	If applicable
10	Dissertation Research Proposal	-	Required
11	Copy of Passport	Required	Required
12	Photo	Required	Required
13	Writing Sample in English (Thesis, Journal Articles, Publications, etc.)	-	Optional
14	GRE score report	-	Optional
15	Video Essay	Optional	Optional

* Must be apostilled OR consular authenticated

** Accepting Tests: TOEFL (IBT, PBT, ITP), TOEIC, TOEIC-S, IELTS, TEPS, NEW TEPS, TEPS-S, I-TEPS, OPIc, PTE Academic, Cambridge English Exams

*** Required for those who have professional experience

Important Notice

Applicants must follow instructions provided in the application guidelines which can be downloaded from KDIS admission website <<https://www.kdischool.ac.kr/admissions/>> during admissions period.

Online application and required documents must be submitted by the deadline. Submitted documents will not be returned.

Contact Us

Admissions Office

@ internationaladmissions@kdis.ac.kr
for internal scholarships
(GAS, Seoul G20)

@ internationaladmissions2@kdis.ac.kr
for other external scholarships
and Ph.D. programs



KNOWLEDGE
SHARING



DEDICATED
TO



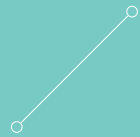
INNOVATIVE
POLICIES FOR



SUSTAINABLE
DEVELOPMENT



KDI SCHOOL



KDI SCHOOL



KDI SCHOOL
KDI School of Public Policy and Management

263 Namsejong-ro, Sejong-si, 30149, Republic of Korea www.kdischool.ac.kr



This product is made of material from well-managed FSC®-certified forests and from recycled materials.